

Development tools to create Web-GIS applications

DbMAP[®] ASJ

the best solution to create and distribute Web-GIS applications

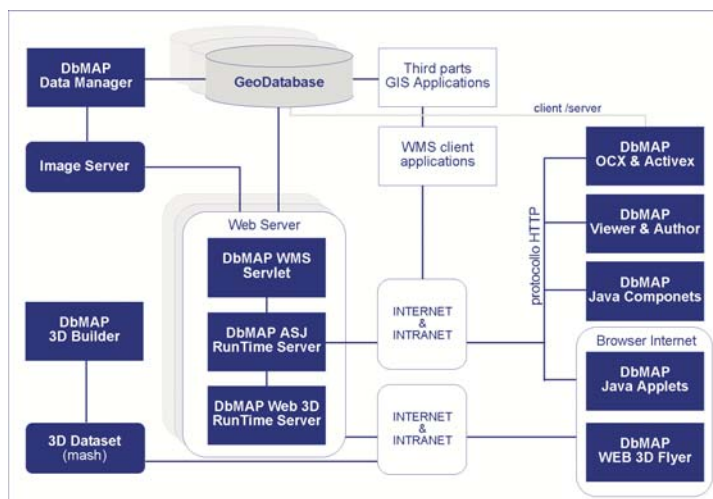
- Easily projecting, producing and publishing Web-GIS portals and GIS desktop applications at very low costs
- Taking advantage of all the capabilities of the most evolved GeoDatabases to centralise and administrate territorial data
- Complementary to all the most common GIS solutions, ensuring the maximum interoperability among applications and among data
- Independent and scalable thanks to the powerful multi-platform component



For further information call +39 (0)376 222181
or visit <http://www.abacogroup.com/eng/dbm/>

DbMAP ASJ has a simple, performing and scalable architecture able to ensure the best interoperability among the applications and among data

DbMAP ASJ takes advantage of all the features, reliability and scalability of **Oracle Locator and Spatial**, the flexibility and open source of **PostGIS**, and even the simplicity of any **RDBMS JDBC/ODBC** (Access, SQL Server, SyBase, MySQL, etc.). DbMAP ASJ works with any **Application Server** and **J2EE Container** (ORACLE, TOMCAT, IBM WEBSHERE, etc.), based on **Windows, Linux** and **MAC OS**; it offers **Web Map Services** supported by any **client WMS** and **Servlets** services supplied with advanced royalty free **applets, OCX** and **Java components**, even open source. These components are exploitable in the WebGIS applications developed with the same programming tools already used for the management applications on the web browser, desktop, handheld and pocket PC.



Main architecture of Web-GIS solution integrates 2D & 3D based with DbMAP ASJ and DbMAP Web 3D.

The efficient server component offers advanced GIS services via web, taking advantage of every feature deriving from the spatial engine chosen.

DbMAP ASJ Runtime Server offers Map and Image Server services (multi-source data) both for remote multi-user displaying and editing directly on every centralized Spatial DataBase. DbMAP ASJ Runtime Server efficiently rules the services and GIS data to publish in order to be completely integrated in the security system chosen from its own portal. DbMAP ASJ Runtime Server is simple to install and to configure and directly reaches the GIS data sources to publish whichever DB they are in and whichever the format of the raster and vectorial files to manage is.

It is provided with licenses specific per number of users or number of web server configurations. In both cases DbMAP ASJ Runtime Server is independent from the number of instances operated by the web server and is equipped with the image services and spatial server components both for DbMAP and WMS clients.

Author & Data Manager make GIS portal construction easy.

DbMAP Viewer & Author, with Data Manager included, ensures the DBA and WebGIS applications developers a fast productivity keeping complete control on the system and spatial Data. Data Manager, directly connected with the DB to manage, makes the geospatial charts peopling easy and fast and warrants the best flexibility and control of the data migration activities. DbMap ASJ Viewer & Author is connected with DbMAP server component via http (internet or intranet) and allows: the best control on the data; the choice of the layers (even from different data sources, driver engines and web servers); the choice of the services and the layout deployed for every application; the geometries direct editing using all the times the features of the engine chosen for the data management.

It is specific for installation on every client connected to the server component via http and is provided with licenses per work station reserved to the holders of Runtime Server. The use of WebGIS Author application projects depends on DbMap ASJ license used to release them. DbMAP Viewer & Author includes Data Manager, that can be directly connected to the data server via Tcp/Ip.

The Developer Kit is complete for all standard development platforms.

DbMAP Developer Kit is the most complete and powerful solution to develop WebGIS applications that are interacting with a central geospatial DB reachable via Web. DbMAP Developer Kit includes advanced components to build applications on every platform, using the same development tools already used for the management applications. These components are not simple modules to display and surf the GIS data, but complete "objects" (Applets, OCX/ActiveX and Java classes) offering advanced "methods" to build reliable and fully controlled applications requiring the best interaction and integration among the alphanumeric data and their graphic and geometric representation, georefered in the space.

It is supplied with licenses per work station (number of developers) and the runtime server license for the development, test and demonstration in the applications realized. DbMAP Developer Kit is provided with a DbMAP Viewer & Author license (DataManager included) connected to the runtime server of the development, test and demonstration. The license of the applets, OCX/activex and Java (for pocket PC also) is devoted to the creation and unlimited deployment royalty free of the WebGIS

DbMAP ASJ Runtime Server

Platform: <ul style="list-style-type: none"> Windows; Linux; MAC OS. 	Environment: <ul style="list-style-type: none"> Web Server and Java/J2EE Container (Oracle AS; Tomcat; IBM Websphere; ecc.) Java 1.4 or later; LDAP access or other systems, provided by the J2EE container;
Spatial DB server: <ul style="list-style-type: none"> Oracle Locator; Oracle Spatial; PostGIS; SDA Spatial Driver for RDBMS JDBC/ODBC (Access; SQL Server; MySQL; ...). 	Image server: <ul style="list-style-type: none"> DbMAP Image Server (ECW; GeoTIFF; DWG Files); IWS Ermapper (also remote); Oracle 10g Spatial/GeoRaster; DbMAPImage Server requires a Windows platform and can be reached by DbMAP ASJ Runtime Server through RMI service.
Services: <ul style="list-style-type: none"> Dedicated services for the DbMAP applets, OCX and Java components; Web Map Services (WMS 1.1.1) for standard WMS clients; Image Web Server with mosaicing and merging of multiple images; Vector Display List got from spatial or alphanumeric query applying optimisation algorithm for the resulting vertexes depending on the current view dimension; Execution of commands provided by the spatial database used and reading of the resulting vectorial or alphanumeric information; Creation of Shapefile through Spatial Database query and download service of it. 	

DbMAP Viewer & Author (including DbMAP Data Manager)

Platform: <ul style="list-style-type: none"> Windows; Linux; MAC OS. 	Environment: <ul style="list-style-type: none"> Java Virtual Machine 1.4 or higher; DbMAP ASJ Runtime Server http connection.
Spatial DB: <ul style="list-style-type: none"> Handled by DbMAP ASJ Runtime Server; Read/Write management of Shapefile, on the Client. 	Raster images: <ul style="list-style-type: none"> Raster Image provided by DbMAP ASJ Runtime Server; TIFF and ECW can be loaded and overlaid from local files.
Services: <ul style="list-style-type: none"> Shapefile Import-export; Creation of union boundaries for the background data; Spatial Database objects display: applying spatial or alphanumeric selection criteria, overlaying with raster and vectorial background and applying data classifications definible by the user; Advanced editing of the spatial database objects; Use commands provided by the spatial database, using an expression generator; Print capabilities with preview and layer list; Creation of WebGis projects customised for internet or intranet usage. 	

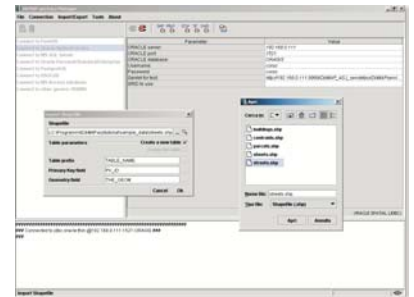
DbMAP Developer Kit (including Runtime Server, Viewer & Author and Data Manager for development, test and demonstration)

Advanced features supplied by the runtime client	Applets (browser+ Java 1.1)	Java Components (Java 1.4 o sup.)	OCX/ActiveX (Client Windows)
Use of DbMAP Runtime Server services through HTTP calls	●	●	●
Client side overlay of vectorial display list and raster background	●	●	●
Exposed methods for handling the graphic page	●	●(*)	●
Save/Load of the graphic page content (raster and vectorial)	○	●	●
Optimised data reload according to the displayed region	●	●	○
Navigation tools (zoom, pan, etc....)	●	●	●
Geometric selection (point, circle, polygon, buffer, etc....)	●	●	●
Alphanumeric query for graphic objects selection	●	●	●
Graphic settings (hatch, line types, fonts, gifs, ecc.)	●	●	●
Customizable graphic settings	●	●	●
Exposed methods for layers management	●	●	○
Exposed methods for graphic editing of the spatial database	●	●	●
Customizable alphanumeric data display (form or list)	●	●	●
Advanced print controls (scaled print included)	●	●	●
Direct use of spatial database function and result management	●	●	●
Display of raster and vectorial local files (1)	○	●	●
Different Spatial DB support (other than those for DbMAP ASJ)	○	○(*)	●
Intersection and Union operators between local objects (2)	○	○	●
Realtime system coordinate conversion (2)	○	○	●
Local Import/Export from/to different vectorial formats	○	○	●

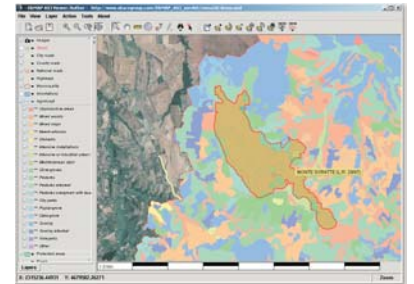
● Yes ○ No

(*) The graphic page, extended to a region defined by the programmer, can be saved and charged again for local working. (1) With the Java components it is possible to locally manage rasters GeoTIFF and ECW and vectors SHP files; with the OCX component it is possible to manage other kinds of rasters (as GeoTIF, JPG, BMP, ECW and SID with the proper driver) and vectors (Shapefile, DWG and DXF). (2) For the java applets and components this function is delegated to the spatial engine.

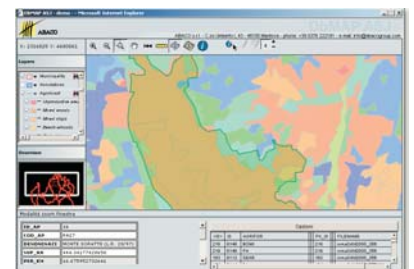
A few steps to create and publish a complete GIS



Use DbMAP ASJ Data Manager to import the territorial bidimensional data in a centralised GeoDatabase.



Use DbMAP ASJ Viewer & Author to build a project to visualize the bidimensional data to publish on the web.



Use DbMAP ASJ applets to create web pages to consult and edit the centralised territorial database.



Use OCX/ActiveX and JAVA components to develop multi-platform http/client and handheld applications.

SHORTCUTS

ON-LINE DEMOS
<http://www.abacogroup.com/dbm/engdemoonline.htm>

DOCUMENTATION
<http://www.abacogroup.com/dbm/engdoc.htm>



Technical features

Among the main technical features of the system are:

- Conformity with OGC (Open GIS Consortium) requisites;
- OpenGIS® Web Map Service Implementation Specification, Version 1.1.1;
- Compatibility with all the most common operative systems (Windows, MacOS, Linux)
- DbMAP ASJ web components are usable with any internet browser; no installation or additional plug-in required; Java 1.1 (or later) virtual machine is enough;
- Server components require Java 1.4 or later and are compatible with the most common web servers and Java/J2EE containers, like Oracle AS, Apache Tomcat, IBM Websphere, ecc.

Specific for:

- Developers and technicians of those companies that use Web-GIS portals to distribute territorial data;
- Database Administrators of those companies that need to centralize and administrate GeoDatabases;
- Developers and technicians of those companies whose purpose is to integrate their own solutions.

ABACO is an Italian company specialized in the research and development of basic technologies which have made it one of the leaders, in Italy and worldwide, for GIS, mapping, Global Positioning System, Computer Aided Design, Facility Management and Technical Documentation System.



PRODUCTS	Price List
DbMAP Viewer & Author	€ 500
DbMAP Developer Kit	€ 2.400
DbMAP ASJ Runtime Server per users number	€ 500
DbMAP ASJ Runtime Server per web server (maximum 2 processors for web server)	€ 6.000
Bundle(*) ORACLE Personal Edition with DbMAP Viewer&Author (includes one licence per one work station of ORACLE 10g Personal Edition, ORACLE 10g Application Server and DbMAP Viewer&Author with Data Manager)	€ 500
(*) Limited promotional offer; (**) Special discount program reserved to resellers and partners; (***) Special discounts available for DbMAP Runtime Server, if delivered as part of Your standard applications	

© Copyright 1990-2006 ABACO srl. The information contained in this document may vary without notice. ABACO srl is not responsible for any technical or editorial mistake or omission. Oracle is a trademark registered by Oracle Corporation Redwood City, California, United States. Every other name contained in this flyer is a registered or protected trademark and belong to its owner.

ABACO Srl
 Headquarters:
 Corso Umberto I, 43
 46100 Mantova - Italy
 Tel. +39 (0)376 222181
 Fax +39 (0)376 222182

Branch Office:
 Via Nepi, 15
 00191 Roma - Italy
 Tel. e Fax +39 (0)6 3338501
 E-mail info@abacogroup.com